

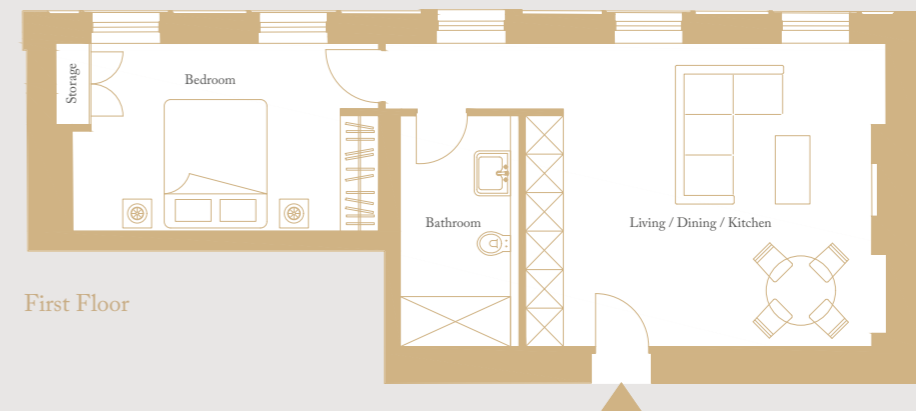
Apartment 8

One Bedroom Apartment Located On The First Floor Facing The Front Gardens. Sitting Directly Above The Grand Stone Portico Entrance. Open Plan Kitchen/Living/Dining Room, One Bedroom And One Bathroom.

50 SQ.M. | 537 SQ.FT.



ONE BEDROOM APARTMENT



First Floor

Bathroom:
1.8m x 3.6m / 5.9ft x 11.8ft
Storage:
0.6m x 1.3m / 2.0ft x 4.3ft
Living / Dining / Kitchen:
5.4m x 4.7m / 17.7ft x 15.4ft
Bedroom:
4.8m x 2.9m / 15.7ft x 9.5ft