

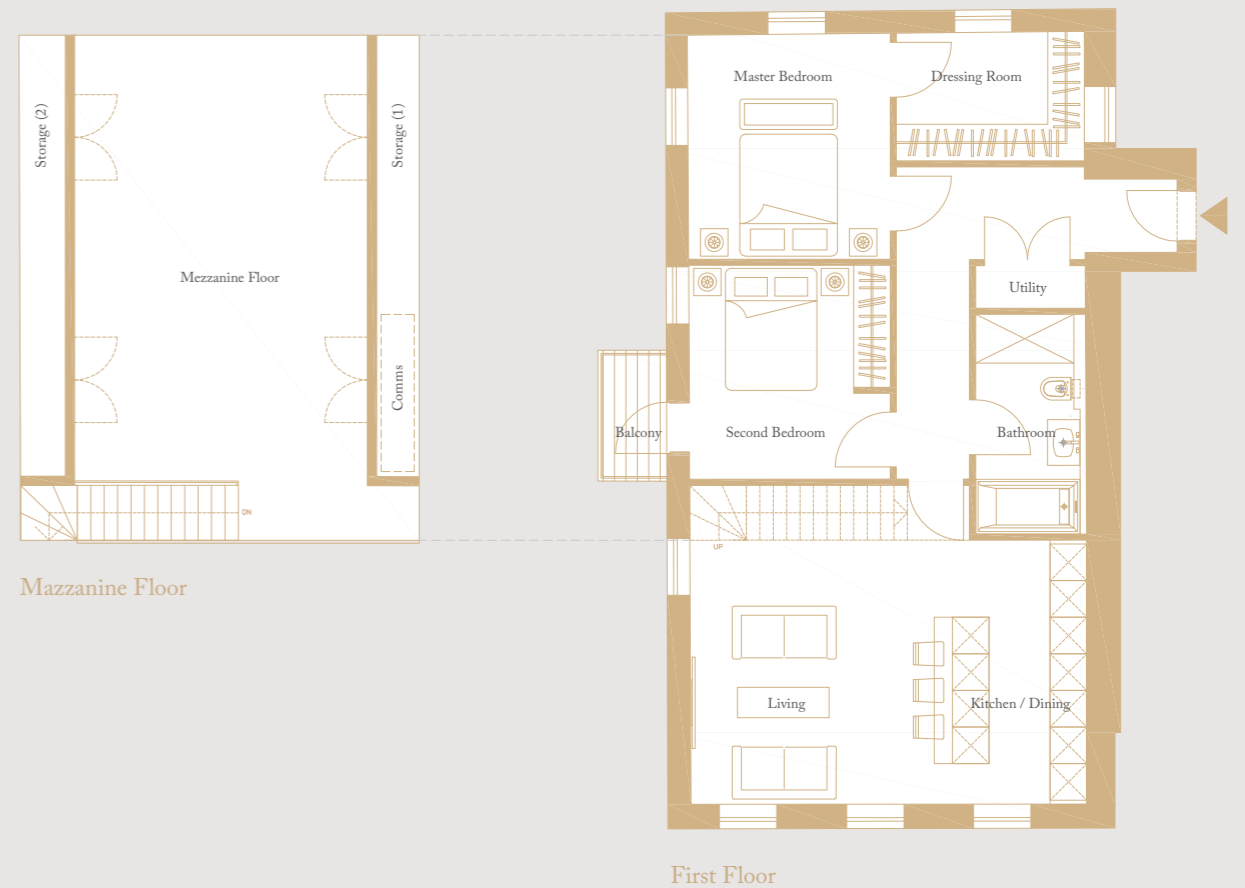
# Apartment 6

Two Bedroom Mezzanine Apartment Located On The First Floor. Benefiting From A Large Open Plan Kitchen/Dining Room With The Lounge Over Looking From The Mezzanine Level Above, Two Bedrooms, One Walk-In Wardrobe And One Bathroom.

120 SQ.M. | 1,292 SQ.FT.



## TWO BEDROOM APARTMENT



Mezzanine Floor

First Floor

Hallway:  
8.5m x 1.2m / 27.9ft x 3.9ft  
Utility:  
1.8m x 0.7m / 5.9ft x 2.3ft  
Bathroom:  
3.6m x 1.8m / 11.8ft x 5.9ft  
Living / Dining / Kitchen:  
6.5m x 4.3m / 21.3ft x 14.1ft  
Master Bedroom:  
3.7m x 3.3m / 12.1ft x 10.8ft  
Dressing Room:  
3.1m x 2.1m / 10.2ft x 6.9ft

Second Bedroom:  
3.5m x 3.3m / 11.5ft x 10.8ft  
Balcony:  
2.1m x 1.1m / 6.9ft x 3.6ft  
Mezzanine Floor:  
7.5m x 4.8m / 24.6ft x 15.7ft  
Comms / Storage:  
7.3m x 0.7m / 24.0ft x 2.3ft  
Storage (2):  
7.3m x 0.7m / 24.0ft x 2.3ft

Floor plans shown are approximate measurements only. Exact layouts and sizes may vary.