

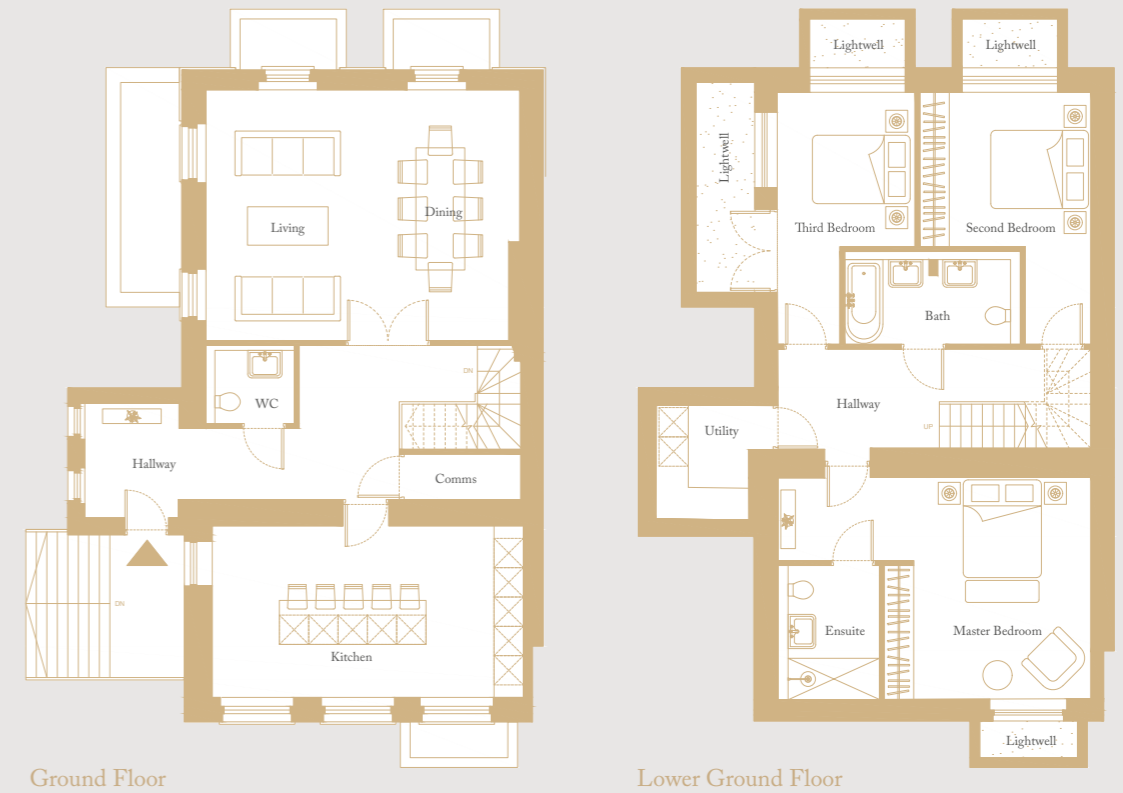
# Apartment 4

Three Bedroom Duplex Apartment Across Ground & Lower Ground Level. Private Side Entrance With A Large Kitchen Overlooking The Rear Gardens, Living/Dining Room With Dual Aspect Views And Three Bedrooms, One En-Suite And A Bathroom.

167 SQ.M. | 1,798 SQ.FT.



## THREE BEDROOM DUPLEX



Living / Dining:  
6.4m x 5.1m / 21.0ft x 16.7ft  
Kitchen:  
6.4m x 3.5m / 21.0ft x 11.5ft  
Master Bedroom  
4.2m x 4.5m / 13.8ft x 14.8ft  
Master Bedroom-Ensuite:  
2.1m x 2.7m / 6.9ft x 8.9ft  
Second Bedroom:  
3.5m x 3.2m / 11.5ft x 10.5ft

Third Bedroom:  
2.8m x 3.2m / 9.2ft x 10.5ft  
WC:  
1.8m x 1.6m / 5.9ft x 5.2ft  
Bath:  
3.6m x 1.9m / 11.8ft x 6.2ft  
Utility:  
1.9m x 2.3m / 6.2ft x 7.5ft  
Comms:  
2.4m x 0.9m / 7.9ft x 3.0ft

Floor plans shown are approximate measurements only. Exact layouts and sizes may vary.